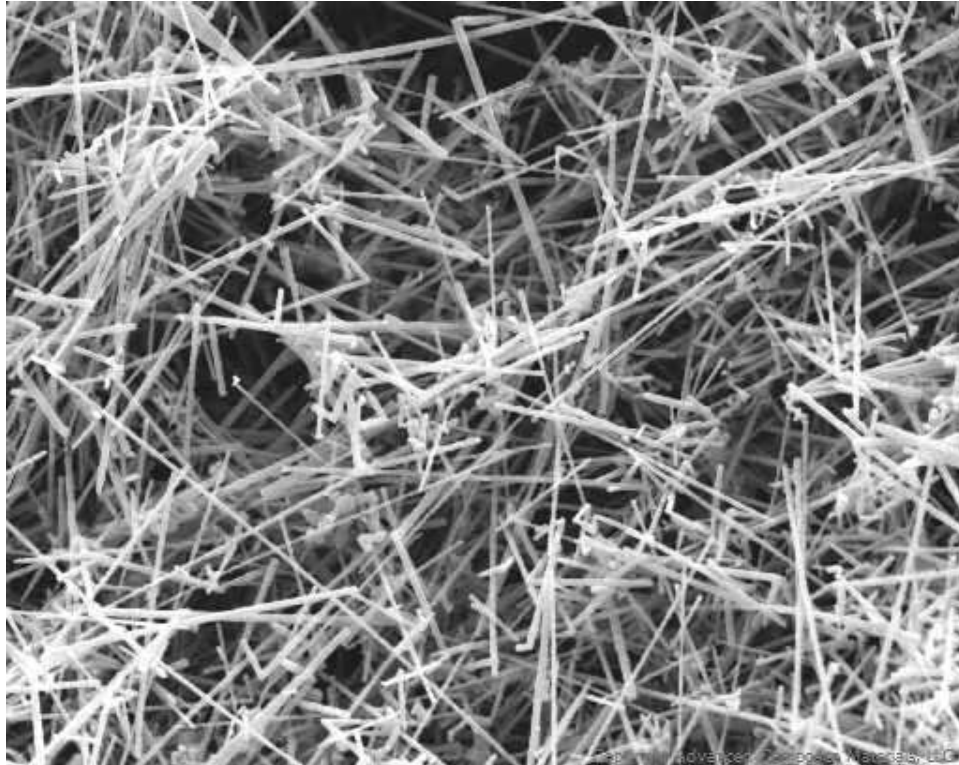
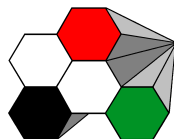


# Silar<sup>®</sup> Silicon Carbide Whiskers

*Single Crystal Technology for Composite Material Reinforcement and Advanced Applications*



Typical Properties	
Crystal Type	Beta (Polytype)
Diameter, $\mu\text{m}$	0.45-0.65
Length, $\mu\text{m}$	5-80
Density, $\text{g/cm}^3$	3.2
Free carbon, wt %	0.05-0.30
Silica, wt %	0.35-0.75



**Advanced  
Composite  
Materials, LLC**

1446 S. Buncombe Road Greer, South Carolina 29651  
864-877-0123 Fax: 864-879-6615 [www.acm-usa.com](http://www.acm-usa.com)